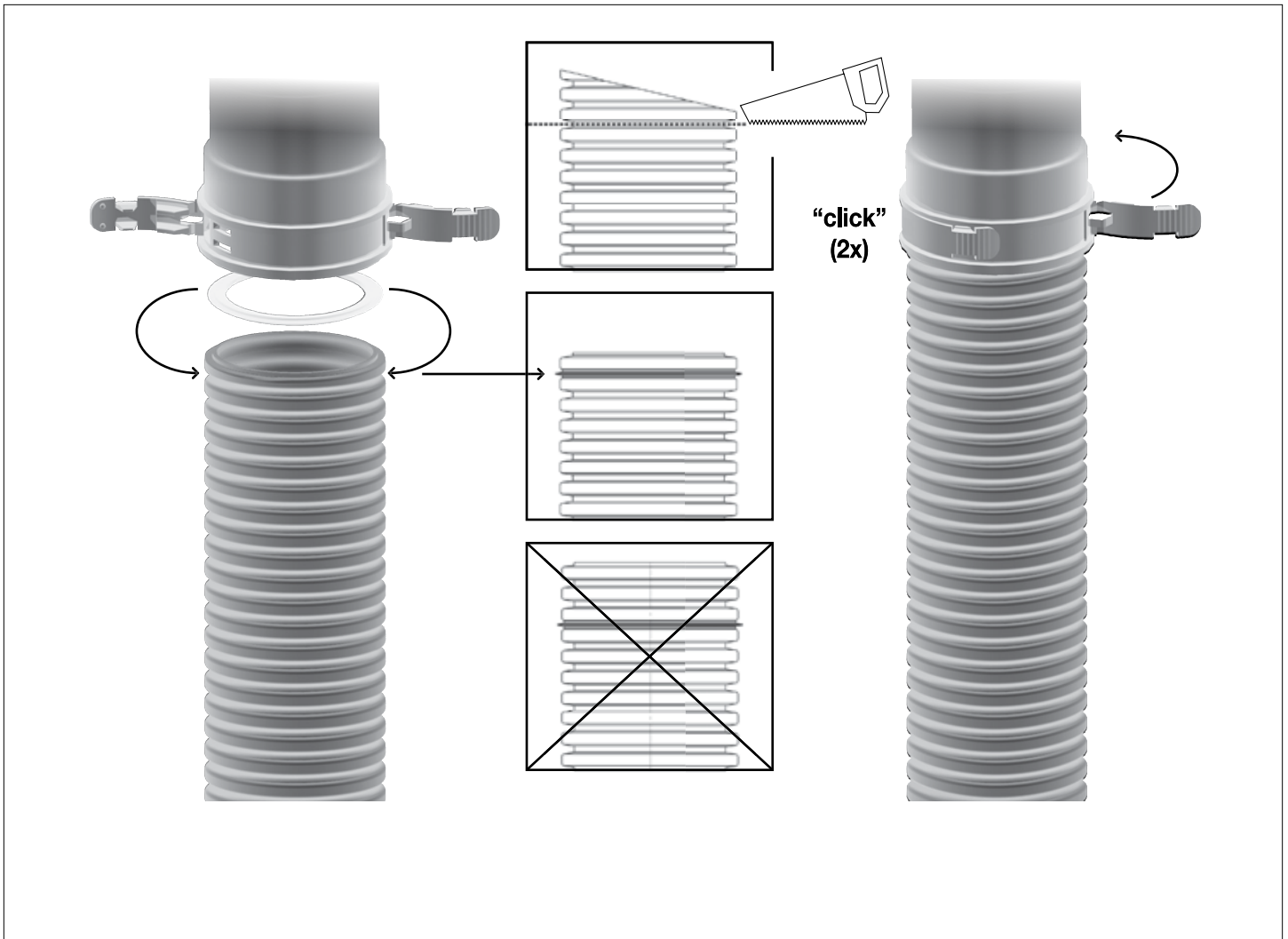


Instructions: Attaching PolyPro® Flex Adapters



Mount the seal into the first whole groove from the cut end and push the flexible liner into the adaptor until it stops. Hold the adaptor to the liner with the latching tabs. It is possible to loosen the latching tabs with a screw driver.

See complete PolyPro Flex installation instructions on our website at:
<http://www.duravent.com/Product.aspx?hProduct=21>

DuraVent
Member of  M&G Group

www.duravent.com 800-835-4429

August 2011 L271